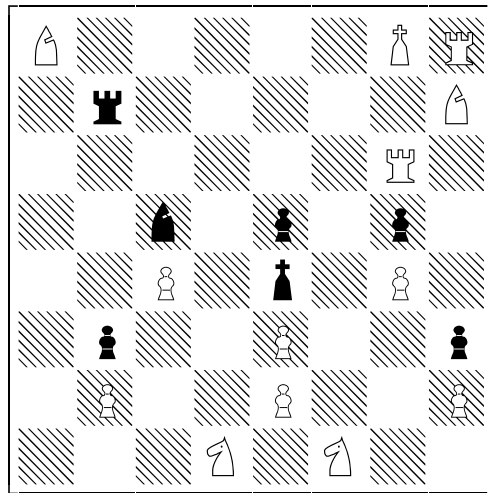


Dave and Jen's (Third annual) 1997 Christmas Fun Quiz:

30 points possible. Please print your full name: _____

Instructions: Answer as many as possible and submit before due date (see below). Answers that are incomplete or ambiguous will not receive credit. Questions #5 and #12 are "fill in the blank" questions.

- 1) Which of the following glows under a black light? (2 points)
a. snail trails b. Pez candy c. Cat urine d. \$20 bills issued after 1996
- 2) *Reward* is to *Drawer* as *Spool* is to: (2 points)
a. Wheel b. Loops c. Box d. Thimble
- 3) Clearly draw an arrow on the chess board (below) showing the one move for white that will **not** result in an immediate checkmate of the black king: (4 points)



(Notes: ♙ is a pawn, ♖ is a rook, ♘ is a knight, ♗ is a bishop, ♕ is a queen, and ♔ is a king. Also note that the two white bishops are both on same color square due to an earlier pawn promotion.)

- 4) Due to his outrageous costume, Mr. Clifford Adams is selected to be the next contestant on Let's Make a Deal™. Monty (the game show host) presents Cliff with door number one, door number two, and door number three, and assures him that behind one of these doors is a prize. Clifford selects door number one. But before the door can be opened, Monty says "to make it more interesting, I am going to open one of the doors not selected by Clifford, to show that there is nothing behind it". He then opens door number three, and sure enough – there's no prize there. He then gives Clifford a chance to change his selection. Assuming Clifford wants to win this prize, should he stick with door number one, or should he switch to door number two? (3 points)
 - a. Clifford should stick with his original choice.
 - b. Clifford should select door number two instead.
 - c. It makes no difference, the odds of winning are 50 / 50.
 - d. He should select door number three and lose.
- 5) What food does one obtain by combining Carbon, Holmium, Cobalt, Lanthanum, and Tellurium? (2 points) _____

6) Cross out nine letters in such a way that the remaining letters spell a single word: (2 points)

NAISNIENLGELTETWEORRSD

7) *Stewardess* is to *Monopoly* as *Reverberated* is to: (3 points)

- a. Honey b. Pinocchio c. Cwm (Yes, cwm is a word) d. Lollipop

8) What are the names of the “see no evil”, “hear no evil”, “speak no evil” monkeys (choose the order that matches the question): (1 point)

- a. Mizaru, Mikazaru, Mazaru b. Mazaru, Mizaru, Mikazaru
c. Mikazaru, Mizaru, Mazaru d. Mazaru, Mikazaru, Mizaru

9) A wealthy woman was murdered with a kitchen knife in her bedroom on a Monday at 12:00 noon, May 26, 1986 in Rye, NY. It was reported that the husband was in the library reading, the gardener was playing gin rummy with his wife, the butler was at the bank cashing a paycheck, and that the cook was in the kitchen baking an apple pie. Who here is suspect? (3 points)

- a. The Husband b. The Gardener c. The Butler d. The Cook

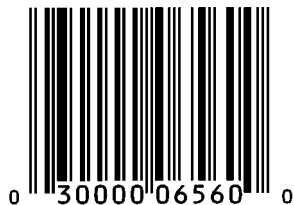
10) How many bluebirds were baked in the pie? (1 point)

- a. 4 b. 20 c. 24 d. 0

11) It so happened that Alice met Tweedledum and Tweedledee along her path. Alice knows that Tweedledum lies on Mondays, Tuesdays, and Wednesdays, and tells the truth on the other days of the week. Tweedledee, on the other hand, lies on Thursdays, Fridays, and Saturdays, but tells the truth on the other days of the week. “Yesterday was one of my lying days” said Tweedledum. “Yesterday was one of my lying days too” said Tweedledee. What day is it? (2 points)

- a. Sunday b. Monday c. Tuesday d. Wednesday
e. Thursday f. Friday g. Saturday

12) What food product is this? (3 points) _____



13) Give or take two points (a 5 point range), how many points did you earn on this year's Christmas Quiz, including this question? (Hint: The instructions for this quiz said that answers that are "ambiguous will not receive credit". Ambiguous answers often pop up in self-referential questions (such as getting this question right may give you addition points, which then means you get this question wrong, which then means you get it right, etc...). However, since ambiguous answers don't receive credit, they must be false because correct answers receive credit.) (2 points)

Legal Stuff: All entries must be hand delivered or postmarked **no later than 1/7/98**. Prize to be given to contestant earning the highest score. Ties broken randomly. Those submitting entries will receive the answers and results directly or by mail. Those who wish to participate in the contest who did not receive a quiz may photo copy someone else's quiz, or request a copy directly from the Youds or from their homepage at <http://www.wco.com/~youd/quizzes.html> (this URL may change). Requests for individual extensions to the quiz due date must be formally submitted to the Youds in writing for consideration. Many of the answers to these questions are backed up by references which, right or wrong, take precedence over your references. Void where prohibited.